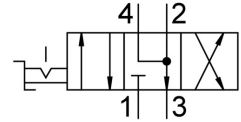
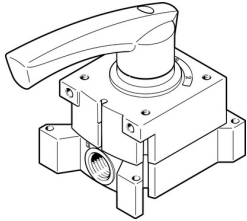


Hand lever valve VHER-H-B43E-G12

Part number: 3192067

FESTO



Data sheet

Feature	Value
Valve function	4/3, exhausted
Actuation type	Manual
Width	95 mm
Standard nominal flow rate	3200 l/min
Pneumatic working port	G1/2
Operating pressure	0 bar ... 10 bar
Information on operating pressure	Vacuum operation at connection 3 only In dual pressure mode, the pressure at connection 1 must be higher than at connection 3.
Structural design	Rotary gate valve
Nominal width	12 mm
Type code	VHER
Exhaust air function	With flow control option
Application note	Operate by hand only
Sealing principle	Hard
Type of control	Direct
Flow direction	Non-reversible
Symbol	00995941
Underlap	yes
Switching position indication	with accessories
Operating medium	Compressed air as per ISO 8573-1:2010 [7:4:4]
Information on operating and pilot media	Operation with oil lubrication possible (required for further use)
Corrosion resistance class (CRC)	2 - Moderate corrosion stress
Temperature of medium	-20 °C ... 80 °C
Ambient temperature	-20 °C ... 80 °C
Actuating torque	5 Nm
Product weight	1010 g
Type of mounting	Optionally: Front panel mounting With through-hole
Pneumatic connection 1	G1/2
Pneumatic connection 2	G1/2
Pneumatic connection 3	G1/2
Pneumatic connection 4	G1/2
Note on materials	Free of copper and PTFE RoHS-compliant
Seals material	NBR

Feature	Value
Housing material	Die-cast aluminum
Lever material	Die-cast aluminum